

November 24th, 2016

For Immediate Release

ART FAIR TOKYO 2017 Announcing 12 Exhibitors and Artists for PROJECTS Section

Art Tokyo Association is pleased to announce details of PROJECTS, one of the highlights of ART FAIR TOKYO 2017, which is the largest art fair in Japan and held for the twelfth time in March 2017. PROJECTS is a series of mini solo shows by up-and-coming artists. The announcement of the PROJECTS exhibitors also finalizes information for all exhibitors at ART FAIR TOKYO 2017.

PROJECTS: New Movements in Art by Up-and-Coming Artists

Sponsor: Deutsche Bank Group

PROJECTS is a section of ART FAIR TOKYO 2017 featuring 12 artist booths, each exhibiting a solo show.

PROJECTS transcends regular categories of “emerging artist” or “emerging gallery” to present exciting art to the world based solely on the importance of the artists. It offers bold encounters with new trends in art, including artists who have already been successfully exhibited at art museums, but whose work is here rediscovered through changes to their use of themes or materials.

These 12 artists go beyond conventional ideas of generation or genre, allowing visitors to compare their diverse worldviews side by side. PROJECTS is one of the most anticipated sections of the fair.



PROJECTS section from ART FAIR TOKYO 2017
Photo: Munetoshi Iwashita

PROJECTS: Exhibitors & Artists

FUMA Contemporary Tokyo | Bunkyo Art Yoshitoshi Kanemaki

Born in 1972, he works with the medium of wood to create sculptures embodying various complex and contradictory facets, such as life and death, and positive and negative. His powerful portrayal of the essence of humanity as well as humorous style and skillful, impressive use of form have all recently attracted attention both in Japan and internationally.

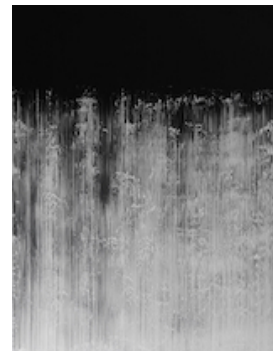


《The wheel of culminate thoughts 2nd》(2016)
Paint on Camphor wood, H56 x W42 x D36 cm
©2016 FUMA Contemporary Tokyo | BUNKYO ART

GAKEI GIMLET SAAS

Akihito Takuma

Born in Kumamoto Prefecture in 1966, he was inspired by French philosopher Gilles Deleuze to create work exploring trajectories that deviate from ordered structures and ideals. His art escapes from the contradiction of seen and unseen, of paper-thin equilibrium, and the divide between East and West. By completely erasing these with his brushstrokes, he eludes dichotomies to demonstrate an uncontrollable aesthetic.

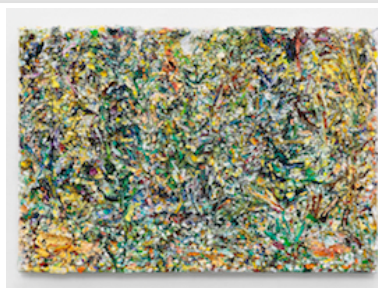


《Line of Flight op 486》(2016)
Oil on canvas, 145 x 112cm
©Akihito Takuma

HARMAS GALLERY

Daisuke Takahashi

Born in 1980, he has recently attracted attention for his abstract paintings that employ large amounts of paint. In his work, a strong interest in color intersects on the surface with insights into the role of painting within the history of art, and a search for movement, as he builds up layer after layer. He has exhibited at such venues as the Museum of Modern Art, Saitama.



Title TBD (2015-16)
Oil, on canvas mounted on wooden panel
112.0 x 145.5cm
Photo by SHIIGI SHIZUNE
©Daisuke Takahashi
Courtesy of HARMAS GALLERY

KEN NAKAHASHI

Erik Swars

Born in Zwenkau, Germany, in 1988, he continues the lineage of the New Leipzig School, as represented by the likes of Neo Rauch, creating oil paintings with highly inventive concepts as well as prints and sculpture. Through his work, he explores ideas of the past, present and future self, the relationship between authority such as the state or government with the individual, and the connection between humanity and nature. Many of his recent artworks are painted with only pale, opaque watercolor gouache on a white canvas, consciously adding layer after layer until it feels right to stop, rather than deliberately setting out to depict something, and leaving any unexpected brushstrokes to create a form that remains as it is.



《reiter samurai》(2016)
Oil on canvas, 170 x 230 cm
©Erik Swars
Courtesy of KEN NAKAHASHI

Satelites ART LAB

Ben Mori

Born in 1981 to a Japanese father and American mother, he creates paintings as well as stained glass and sculptural artworks that express a unique worldview integrating both a Japanese sensibility and elements of the culture he experienced when studying in America. He has also launched his own fashion brands while continuing to work internationally as a visual artist.



《Butterfly》(2014)
Mixed media, DIA 90.0cm

Satoko Oe Contemporary Teppei Kaneuji

Born in 1978. His work has attracted attention for its collage-style technique of taking parts of everyday objects and re-assembling them in ways that reinterpret existing contexts. His output includes sculptural artworks using figures, household items, and other ready-made products, as well as video and two-dimensional work.



Installation view of solo show "ZONES"
at MIMOCA in 2016
Photo: Yuki Moriya

SHIKISAISHA Ryutarotakemochi Yamamura

Born in 1976. His work features incredibly detailed and thorough depictions of plants that harness his remarkable skill. In recent years, he has dispensed with color to focus on bringing out the intense presence of the plants and insects on the surface of the painting as a single spirit. For PROJECTS, he plans to exhibit an artwork themed around Mt Aso in Kumamoto, where he was born.



《Rakudayama》(2016)
Black ink on Japanese paper

SHUMOKU GALLERY Shoen Tominaga

Born in Nagoya in 1929, he devoted himself initially to avant-garde and abstract art. In 1951, he was invited to join the Bokujin-kai (Ink Human Society) by Shiryu Morita, where he started to exhibit and publish work from the first issue of its journal. After leaving the group, he continued to value the spirit of calligraphy and ink above all else. From the 1960s he created a wide range of work, from drawings to collage and metal art, based on his calligraphy studies and interchange with other contemporary artists. In recent years, he has returned to ink and produces work exploring the calligraphy necessary for the zeitgeist.



《Katadoru》(1987)
Wood, stainless steel
100x82cm

SNOW Contemporary HITOTZUKI

This artist unit comprises two members (KAMI, born in 1974, and SASU, born in 1974) and produces mainly murals. As its name (meaning "sun" and "moon") suggests, the unit attempts to create a world harmonizing opposites like male and female, plus and minus, and yin and yang. Its unique worldview intermixes with an aesthetic consciousness derived from street culture, creating a new kind of landscape.

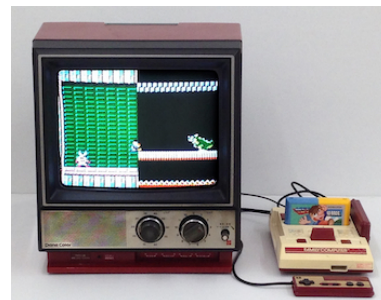


《Planet Bouquet》(2016)
15.24 x 16.46m
"POW! WOW! LONG BEACH 2016" (20-17 July,
2016 / 228 E Broadway Long Beach, CA 90802)
Photo: Brandon Shigeta

Takashi Somemiya Gallery

Eiki Okuda

Born in 1985. His videos and paintings use images from old video games. He also creates interactive game artworks that can be played on commercially available game consoles. He programs the games himself as well as soldering the base and even making original packaging for the cartridge. He won the Encouragement Prize at the 2008 Gunma Biennale for Young Artists.

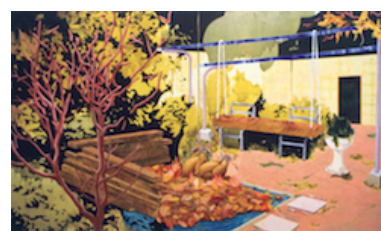


《MEGIO》(2016)
Mixed media, Dimension variable
©Eiki Okuda
Courtesy of Takashi Somemiya Gallery

Gallery Yamaki Fine Art

Asuka Nakayama

Born in 1986. Her work attempts to express how the relationship between nature and humanity is simultaneously one of symbiosis and control. She examines spaces such as gardens where the natural and artificial coexist, using vibrant colors to express the signs of humans symbolized by their absence.



《edible garden》(2010)
Oil on canvas, 230x390cm

Yoshimi Arts

Katsuo Tachi

1964–2009. Influenced by neo-expressionism, he produced a substantial body of paintings featuring organic shapes created with large brushstrokes. He attracted attention as part of the Kansai New Wave. His work expressed his own identity while also incorporating vitality, stillness, and the passage of time.



《December.10.2008》(2008)
Oil on canvas, 91.0x91.0 cm
©Katsuo Tachi
Courtesy of Yoshimi Arts

Press Materials

- All images in this press release are intended for reference only. They may not be exhibited in the Projects section of the fair. Please only use these images for purposes of reporting about ART FAIR TOKYO 2017.
- Unauthorized reproduction, copying and alteration or other acts that infringe on the copyright holders are strictly prohibited.
- Please include the caption when using official press images.
- Please do not crop or edit the images.
- As much as possible, please send articles for checking prior to publication.
- Please supply a copy of any print article written about the fair. For online articles, please send the URL.
- For inquiries regarding this press release or requests for interviews or coverage of Projects, please contact the ART FAIR TOKYO press team below.

ART FAIR TOKYO PR Team: press@artfairsokyo.com / Tel: 03-5797-7912

Event Outline

Title: ART FAIR TOKYO 2017

Organizers: Art Tokyo Association / TV TOKYO / BS Japan Corporation

Duration: 16th Thursday - 19th Sunday, March 2017

Private Preview	16 th (Thu)	16:00 - 18:00	*Invitee and Press only
Vernissage	16 th (Thu)	18:00 - 21:00	
VIP Hours	17 th (Fri)	11:00 - 13:00	*Invitee only
Open to the public	17 th (Fri)	13:00 - 20:00	
	18 th (Sat)	11:00 - 20:00	
	19 th (Sun)	10:30 - 17:00	

Venue: Tokyo International Forum, Hall E & Lobby Gallery (TBC) (3-5-1 Marunouchi, Chiyoda-ku, Tokyo)

Ticket: 1 DAY Free Pass 2,800 JPY / **Advanced Ticket:** 1 DAY Free Pass 2,300 JPY

In Corporation with: Ministry of Foreign Affairs of Japan / Ministry of Economy, Trade and Industry / Agency for Cultural Affairs / Japan Tourism Agency

Embassy of the Islamic Republic of Afghanistan in Japan / Embassy of the Argentine Republic in Japan / Embassy of the Republic of Armenia to Japan / Australian Embassy Tokyo / Embassy of the Republic of Azerbaijan in Japan / Embassy of the Kingdom of Bahrain to Japan / Embassy of the People's Republic of Bangladesh, Tokyo / Embassy of Belize in Japan / Embassy of Bosnia and Herzegovina in Japan / Embassy of Brazil / British Council / Embassy of the Republic of Bulgaria to Japan / Embassy of Burkina Faso in Japan / Embassy of Canada in Japan / Embassy of the Republic of Chile in Japan / Embassy of the People's Republic of China Cultural Section / Embassy of the Republic of Colombia in Japan / Embassy of the Republic of Cuba in Japan / Royal Danish Embassy Tokyo / Embassy of the Republic of Djibouti in Japan / Embassy of the Dominican Republic / Embassy of France/Institut français du Japon / Embassy of the Federal Republic of Germany / Embassy of the Republic of Honduras in Japan / Embassy of Hungary / Embassy of the Republic of Indonesia in Japan / Embassy of the Islamic Republic of Iran in Japan / Embassy of Ireland, Tokyo / Embassy of Israel / Embassy of Italy in Tokyo / Embassy of Jamaica in Japan / Embassy of the Republic of Kenya in Japan / Korean Cultural Center Korean Embassy in Japan / Embassy of the Republic of Latvia in Japan / Embassy of the Republic of Lebanon in Japan / Embassy of the Kingdom of Lesotho to Japan / Embassy of the Republic of Macedonia / Embassy of the Republic of Madagascar in Japan / Embassy of Malaysia in Japan / Embassy of the United Mexican States in Japan / Embassy of the Republic of Mozambique in Japan / Embassy of the Republic of the Union of Myanmar, Tokyo / Embassy of the Republic of Namibia in Japan / Embassy of the Kingdom of the Netherlands / Embassy of the Republic of Nicaragua in Japan / Royal Norwegian Embassy in Tokyo / Embassy of the Islamic Republic of Pakistan in Japan / Embassy of the Republic of Palau in Japan / Embassy of the Republic of Panama in Japan / Embassy of the Republic of Peru in Japan / Embassy of the Republic of the Philippines, Tokyo / Embassy of the Russian Federation, Russian Cooperation Agency / Embassy of the Independent State of Samoa in Japan / Embassy of the Republic of San Marino in Japan / Embassy of the Republic of Senegal in Japan / Embassy of the Republic of Singapore in Japan / Embassy of Spain / Embassy of Switzerland in Japan / Embassy of the Syrian Arab Republic in Japan / Royal Thai Embassy in Japan / Embassy of the Democratic Republic of Timor-Leste / Embassy of the Republic of Tunisia in Japan / U.S. Embassy, Tokyo / Embassy of the Republic of Uzbekistan in Japan

Nikkei Inc. / Nippon Cultural Broadcasting Inc. / Japanese Red Cross Society / Kanazawa City / Toyama City

Sponsors: Warehouse TERRADA / MORIMOTO Co.,Ltd. / Deutsche Bank Group and TBA

Main Partner Hotel: Park Hotel Tokyo

Corporate Media Partner: The Mainichi Newspapers Co., Ltd.

Website: <http://artfairtokyo.com>

Contact: Art Tokyo Association

likuradai Bldg. 4F, 1-9-12 Azabudai Minato-ku, Tokyo 106-0041 Japan

Tel: +81-3-5797-7911 Fax: +81-3-5797-7913 Email: info@artfairtokyo.com

What is ART FAIR TOKYO?

ART FAIR TOKYO is the largest international art fair in Japan, held in Tokyo every spring. Over 150 galleries from Japan and overseas participate in the fair, offering works for display and sale in a wide variety of genres including antiques, crafts, *Nihonga* (Japanese painting), modern and contemporary art. During the event, there are historically significant Japanese art works on display as well as special exhibitions attempting to communicate the "now" of Tokyo's art scene and market, and related symposia and parties held at locations around the city. The international and diverse art market platform, ART FAIR TOKYO, is a place not only for art fans and art industry people, but also ambassadors from various countries, government officials, and business leaders to exchange information and engage socially. (56,300 attendees in 2016)

ART FAIR TOKYO PR : Li Yi / Yuko Shimada / Akane Miki

likuradai Bldg. 4F, 1-9-12 Azabudai, Minato-ku, Tokyo 106-0041 Japan

TEL: +81-3-5797-7912 / FAX: +81-3-5797-7913 / E-MAIL: press@artfairtokyo.com