

MAR.16, 2018.

For Immediate Release

Art Fair Tokyo 2018

Details released for Galleries and Projects!
Additional information about the two exhibitions!
Free shuttle bus scheduled!

The 13th edition of Japan's largest international art fair, ART FAIR TOKYO 2018 (March 8–11, 2018, hereinafter AFT2018), 164 exhibitors will participate – the largest to date. There will be more large-scale booths in Galleries this year, for a total of 153 exhibitors in Hall E. The lobby gallery in the free-entry area will have several project exhibits, which are expected to set the tone for the future of Japan's art scene. With solo booths by up-and-coming galleries in "Projects", artists from nine countries recommended by their respective national ambassadors at "World Art Tokyo – Pangaea Tectonics", students from Japan's six major art universities will present "Future Artists Tokyo – Switch Room" and more, the AFT 2018 entrance will provide a sense of the cutting edge of the current day and the future beyond. Additionally, there will be a free shuttle bus running between AFT 2018 and three other art fairs underway in Tokyo during the same period.

- AFT2018 Galleries
- AFT2018 Projects Exhibiting Artists revealed!
- 「World Art Tokyo – Pangaea Tectonics –」 Exhibition held in connection with each country's embassy – All participating artists confirmed
- 「Future Artists Tokyo – Switch Room –」 Exhibition held in connection with Japan's six major art universities – All participating artists confirmed
- TERRADA ART BUS will shuttle visitors between four art events free of charge
- A free shuttle bus, the TERRADA ART BUS, will run four art events
- Asian Art Award 2017 supported by Warehouse TERRADA grand prizewinning work
- Asian Art Award 2018 supported by Warehouse TERRADA Awards Announcement
- Explore AFT2018 with ease, with new color-coded areas
- Art Fair Tokyo 2018 Overview

AFT2018 Galleries

Galleries will have the most participants ever, with 153 galleries. Experience this year's concept of living with art, "Art is Life by incorporating innovative art production methods such as installations and performance into portfolios and collections in addition to historical methods of art production such as oil painting.

This year sees an increase in antiques exhibitors, and the variety of pieces exhibited has expanded. Major dealer in Chinese pottery, Mayuyama Co, Ltd, will exhibit a remarkable celadon piece from the Southern Song dynasty. Additionally, Daishojiya Co., Ltd will have a large *somezuke* plate, and first-time exhibitor Otsuka Fine Art will show a pot from the Joseon Dynasty. In Japanese art, Nabeshima will exhibit, and Homando will have some amazing pieces from the Meiji era that have recently been gathering attention, including cloisonné and Satsuma-yaki pieces. For the first time, Buddhist art dealer Konishi Taikando will exhibit a Buddhist statue from the Heian era.

Modern art continues to steadily support Japan's art market. Galerie Nichido, which always exhibits valuable oil paintings, will show the work of Takeji Fujishima. Marueido will have work by the talented painter of *nihonga*, Sho Ishimoto. Saihodo Gallery will exhibit the postwar avant-garde work of Kikuji Yamashita.

This year's craft exhibits are full of creative energy. First-time exhibitor Tanimatsuya Toda Gallery will have new work by Raku Kichizaemon XV, and Nakacho Konishi will exhibit stylish bamboo art objects by Iwao Ikeda.

Global top gallery Perrotin will participate, and there will be plenty to see in contemporary art. At the Perrotin booth, a large sculpture by Xue Zhen will be displayed atop tatami. Sakurado Fine Arts will introduce a large work by American artist Jonas Wood. Gallery Anzai will show a collection of valuable works collected over the past 30 years. The leading Japanese contemporary art gallery Scai The Bathhouse will display work by Bosco Sodi, whose name grows steadily worldwide, and Shugo Arts will exhibit a rich assortment of Japanese artists including the young up-and-coming Masaya Chiba.

From outside Japan, Big & Small Art Co. (Manila) will exhibit a solo exhibition of Philippine contemporary art mainstay Ronald Ventura, and Over the Influence (Hong Kong) will hold a solo show of the popular artist, Invader.

At AFT2018, the prices of exhibited works are on the rise, and over 2000 pieces are priced in the range of several hundred million yen or more. This is an opportunity to view and purchase valuable museum-calibre works. Further,

in addition to the artwork itself, the way it is displayed is also an important element. This year there are more large booths, and they are sure to provide impressive exhibits. Together with Projects, enjoy 164 exhibitors' thoroughly thought-out exhibits, artwork selections, and innovative artist-produced installations.



Jonas Wood 《Head Up》 (2013)
Oil and acrylic on canvas



Celadon *gui* style incense burner
(13th century)



Kengo KITO cartwheel galaxy (2017)
mixed media



Yuki Nara Bone Flower (2017)
Ceramic

AFT2018 Projects

The Projects section of Art Fair Tokyo is sponsored by Deutsche Bank Group as part of its commitment to supporting and promoting diverse talent under the motto of "ArtWorks." Eleven galleries each present a solo exhibition by an up-and-coming artist, featuring painting, photography, installations, and contemporary netsuke.

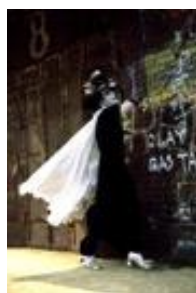


Photo: Kazuo Ohno

P01 Sprout Curation

Naoya Ikegami

Butoh deserves a place alongside the art movements of Gutai and Mono-ha as one of the major examples of the postwar arts in Japan. This selection of beautiful images documenting the Japanese dance form are taken from the valuable archive of theater and performance photographer Naoya Ikegami (b. 1954), including his images of Admiring La Argentina (1977), which reunited Butoh pioneers Kazuo Ohno and Tatsumi Hijikata, and the work Min Tanaka.



P02 TALION GALLERY

Momoko Jennifer Iida

Momoko Jennifer Iida (b. 1987) is a painter who employs a unique method whereby she allows layers of oil paints to flow and laminates them. The colors and shapes of the paints become fixed according to gravity, separating and moving away from her intent to shift organically. In this exists a contingency and multilayered temporality that opposes the artist's own volition to paint something.

Photo: Shizune Shiigi / Courtesy of TALION GALLERY

Beaming Light / 2015 / Oil on canvas / 100 x 80.5 cm / Photo: Shizune Shiigi / Courtesy of TALION GALLERY



P03 nap gallery

Ryota Katsukura

Ryota Katsukura (b. 1978) is a photographer who possesses an affection and passion for exceptional photography. He juxtaposes the trivial incidents in our everyday lives alongside major historical events. His work employs deft techniques and humor, exploring how he can use the various elements and photographs as a means of communicating.

Nameless Story No.15 / 2013-2017 / Chromogenic print / Print: 76.2 x 95.3 cm, image: 67.2 x 85.2 cm



P04 KAYOKOYUKI

Yohei Imamura

Yohei Imamura (b. 1978) creates sculptural artworks by layering oil ink thousands of times over the analog reproduction technique of silkscreen printing. The resulting mountain range forms and complex geometrical patterns that take over a year to make through this method, which he invented himself, are compelling expressions of the accumulation of time in the natural world.

tsurugi No.2 / 2016 / Silkscreen print, oil ink / 55 x 56 x 10 cm



P05 Yutaka Kikutake Gallery

Kisho Mukaiyama

Spending his adolescence in Koyasan, one of Japan's foremost centers of esoteric Buddhism, Kisho Mukaiyama (b. 1968) came into contact with the serene surrounding environment and the Buddhist art that exists there. This formative experience is connected to the primordial state of existence that is light, which Mukaiyama has continued to use as a motif ever since his early career. In his signature work employing wax, he has attempted to give and fix form to light. His recent output has also included paintings, attracting much acclaim for his artworks in which various hues flicker with the light, making the invisible visible.

Vendarta 91 – KUGINPYTG / 2017 / Acrylic on canvas / 91 x 91 x 4 cm



P06 Satoko Oe Contemporary

Chihiro Mori

Straddling such media as painting, drawing, photography, sculpture, and video, Chihiro Mori (b. 1978) draws on her sharp powers of observation and comic sensibility to uniquely rearrange and connect fragments of memory and phenomena encountered in urban life, from signboards to emblems, unexpectedly heard words, childhood pictures, and dreams.

0kHz (hockey) / 2017 / Sumi, acrylic and pencil on paper mounted on wood panel / 99.5 x 16 cm



P07 island JAPAN

Tsutomu Yamamoto

Tsutomu Yamamoto (b. 1980) believes that the aggregation of insignificant phenomena leads to the recognition of our relationship with the world of the here and now. By creating phenomena such as the fluttering of the wind or the glimmering of light in the exhibition space, the artist aspires to make a place allowing awareness of surplus in stable conditions, and the continuation of feelings of reality.

Installation view at BLOCK HOUSE

Photo: KABO / ©TSUTOMU YAMAMOTO / Courtesy of island JAPAN Co., Ltd.



P08 Gallery Hanakagesho

Shinya Nagashima

After graduating with a degree in sculpture from Kyoto University of Art and Design, Shinya Nagashima (b. 1986) taught himself how to make netsuke and subsequently pioneered a new contemporary take of the traditional ornaments that were used like toggles with clothing. His motifs of beautiful young girls, inspired by two-dimensional images, not only reflect elements of Japanese subcultures but also form an attempt to create a kind of artistic expression unconstrained by the conventions of medium (such as sculpture, crafts, figures, models, and dolls).

Ukanomitama (goddess of fox) / 2018 / Boxwood, glass, mineral pigment / 15 x 6 x 5 cm / ©Gallery Hanakagesho



P09 Takashi Somemiya Gallery

Motoko Otsuki

In her painting, Motoko Otsuki (b. 1979) has continued to pursue the relationship between human emotions and senses. For her exhibit here, she concentrates on the depth of our emotions and the unconscious, extracting in the style of snapshots the kinds of scenes and landscapes that all of us have seen, which she then arranges like a story.

Scene / 2017 / Oil on canvas / 45.5 x 37.9 cm / ©Motoko Otsuki / Courtesy of Takashi Somemiya Gallery



P10 COMBINE / BAMI gallery

Yusuke Yagi

Yusuke Yagi (b. 1991) expresses the nightscape of the city through an unusual combination of pointillism with Nihonga (Japanese-style painting) pigments. As opposed to landscape paintings that depict the nighttime cityscape, Yagi portrays the particles of "idle light" that shine brightly in a city empty of people at two o'clock in the morning. His astute gaze conveys doubts about the civilization that mankind has built up.

2016/03/18 2:15 / 2017 / Mineral pigment, pigment on cotton cloth / 53 x 53 cm
/ ©COMBINE/BAMI gallery



P11 Nii Fine Arts

Yasuhide Kunimoto

Through his paintings of crowds as lines of figures in silhouette, Yasuhide Kunimoto (b. 1984) poses questions about the existence of mankind that is simultaneously individual and collective. He creates artworks that offer a sense of the beauty of the human form by the way he depicts poses and actions derived from sport.

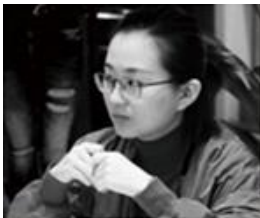
sumo / 2018 / Acrylic on canvas / 65.3 x 91 cm

「World Art Tokyo — Pangaea Tectonics — 」 Exhibition held in connection with each country's embassy – All participating artists confirmed

ART FAIR TOKYO 2018 aims to be a place where cultural exchange can occur on an international scale, and has received sponsorship from 93 embassies this year. The World Art Tokyo – Pangaea Tectonics exhibition, held for the first time this year, features artists with bright futures on the global stage that have been recommended by their respective ambassadors to Japan from nine countries. The theme of the exhibition is "Pangaea Tectonics: Diastrophism of Emerging Art ⇄ Diverging New Tales". The curation for this international exhibition was handled by a student in the Department of Arts Studies and Curatorial Practices at the Tokyo University of the Arts Graduate School of Global Arts, using the new stories created by artists from nine diverse countries to emphasize differences and commonalities that emerge through vast areas on the earth that have influenced one another through history since ancient times.

AFT2018 Special Sections Site : https://artfairtokyo.com/2018/special_sections

【Participating Artists】



【China】Teng Teng



【Colombia】Federico Uribe



【DR Congo】Henri Kalama Akulez



【France】Olivier Sèvre



【Hungary】Agnes Husz



【Israel】Yochai Matos



【Italy】Gianluca Malgeri



【Namibia】Saara Ndinelago Nekomba



【Switzerland】Manon Wertenbroek

【Curation】

Seiha Kurosawa (Masters Program, Department of Arts Studies and Curatorial Practices, Tokyo University of the Arts Graduate School of Global Arts)

World Art Tokyo "Pangaea Tectonics: Diastrophism of Emerging Art ⇄ Diverging New Tales"

Japanese Cultural Promotion Activities 2017: Pilot Project for Creating International Cultural Hubs

Organizer : Agency for Cultural Affairs / Art Tokyo Association

Supervisor: Toyomi Hoshina (Trustee, Vice President, Tokyo University of the Arts)

「Future Artists Tokyo— Switch Room —」 Exhibition held in connection with Japan's six major art universities – All participating artists confirmed

Student curators from Japan's six major art universities have teamed up to select 12 student works and execute the exhibition, Future Artists Tokyo: Switch Room. The purpose of the project is to provide real life experience to students looking to make careers in art, to help them to become people who can work internationally. Students from Tokyo University of the Arts, University of Tsukuba, Joshibi University of Art and Design, Tama Art University, Tokyo Zokei University, and Musashino Art University participated in the project.

Just as the Switch Room theme was chosen by the students, the exhibition will become a point of connection, and it may become a starting point that creates artists and curators that take on important roles in the future of Japan's art scene.

Switch Room Artists

Tokyo University of the Arts	: Siode Asami	Muramatsu Daiki,
University of Tsukuba	: Sakamoto Yuki	Shiina Shogo
Joshibi University of Art and Design	: Okuhara Tina	Shizawa Kotoka
Tama Art University	: Kato Mai	Miyabayashi Hinako
Tokyo Zokei University	: Abe Tomoko	Sugahara Gensho
Musashino Art University	: Ikegami Ryoko	Kondo Taro



Miyabayashi Hinako
 "Daily Diary" 2017 / Oil, acrylic, and charcoal on canvas/300×350cm



Siode Asami
 "BOX figure 5" 2017 / Oil and chalk on hemp threads / 190×180cm



Sugahara Gensho
 "A MAN" 2018/FRP, Plastic Bottles

About the Switch Room theme

The exhibition, "Switch Room" is an experiment meant to create circuits that emit new light by connecting future culture-bearers scattered around Tokyo.

Search for "switch room" on Google and there are images of rooms full of electrical equipment inside large corporate buildings. However, search for it in phonetic Japanese, and you'll see images of "restrooms unique in the world that help patrons switch their feelings on and off" designed for a certain department store in Tokyo. This use of English in a Japanese context could be considered a uniquely Japanese expression created through connections with the rest of the world. This exhibition has been curated by six students who act as switches and takes original works by twelve diverse people who have just emerged from Japan's art education environment to make new expressive pathways.

Switch Room Curation Team

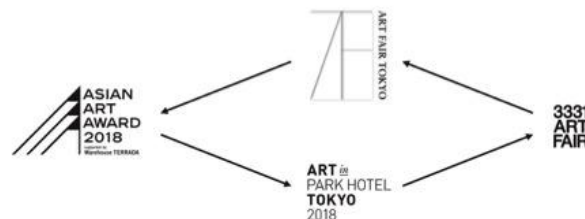
Utsumi Junya (Tokyo University of the Arts)	Kim Maki (Musashino Art University)
Takahashi Wakana (University of Tsukuba)	Morino Daichi (Musashino Art University)
Mariko Morimoto (Joshibi University of Art and Design)	
Naito Masane (Tama Art University)	

Supervisor: Toyomi Hoshina (Trustee, Vice President, Tokyo University of the Arts)



A free shuttle bus, the TERRADA ART BUS, will run four art events

From March 9 (Friday) to 11 (Sunday), a free shuttle bus, the TERRADA ART BUS, will run on a 40 minute route between four art events occurring in the city, including AFT2018. The bus will depart Yurakucho (AFT2018), then go to Tennozu (AAA 2018), then Shiodome (AiPHT 2018), then Soto-kanda (3331 ART FAIR 2018).



Asian Art Award 2017 supported by Warehouse TERRADA grand prizewinning work

Asian Art Award supported by Warehouse TERRADA is a new award for contemporary art created in 2017 with the intent to support artists who are anticipated to be successful first in Japan, then Asia, and ultimately internationally.

Last February, five curators made up a jury which selected five finalists, and in September a finalist exhibition was held where a jury made up of curators based in Japan, Singapore, and China conducted the final review and settled on Chikako Yamashiro's "Mud Man" (2017 Film Ver.) for the grand prize. The work was shown this January at Art Stage Singapore 2018, and it will also be shown at AFT2018 in a room adjacent to the Access Area. (March 9-11)



Screening (TBC)

March 9th 1pm-8pm
10th 1pm-8pm
11th 11am-5pm

Mud man by Chikako Yamashiro (2017)

Asian Art Award 2017 supported by Warehouse TERRADA-Finalists Exhibition

In cooperation with AICHI TRIENNALE 2016, ©Chikako Yamashiro, Courtesy of Yumiko Chiba Associates



Asian Art Award 2018 supported by Warehouse TERRADA Awards Announcement

For the second edition of Asian Art Award 2018 supported by Warehouse TERRADA, the shortlist of finalists: AKI INOMATA, Takehito Koganezawa, Motohiro Tomii and Masahiro Wada was decided by a panel of five curators.

These finalists will create new work or the equivalent, which will then be exhibited at TERRADA ART COMPLEX 4F from 3rd to 18th March 2018. During the exhibition, a jury of six international art world figures (Yuji Akimoto, Yuko Hasegawa, Yoko Hayashi, Joyce Toh, You Yang, and Bao Yifeng) will decide the recipient of the Grand Prize, who will be announced at Art Fair Tokyo 2018 on 8th March.

<Awards Announcement Press
Conference>

Date: 3pm March 8th (Thu.), 2018
Venue Tokyo International
Forum, Hall E, Seminar Room (inside
Art Fair Tokyo 2018)

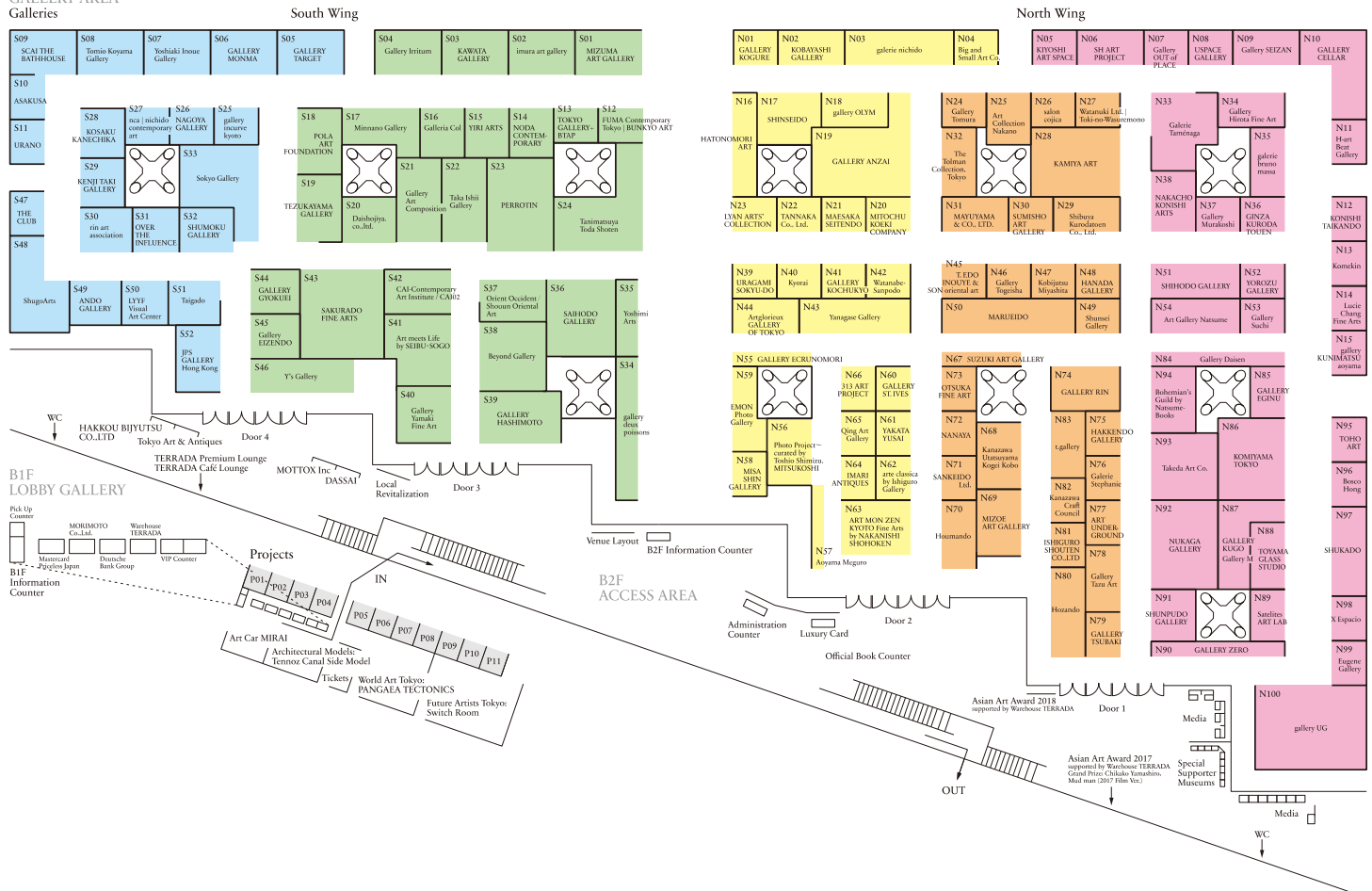




Explore AFT2018 with ease, with new color-coded areas

153 galleries will exhibit in Hall E, and this time the venue will be divided into five color-coded areas. Each area: light blue, green, yellow, orange, and pink, will have color-coded signs to help make it easier to efficiently navigate the huge venue.

B2F GALLERY AREA



Press Accreditation

Press accreditation for AFT2018 has begun. Please register in advance on the AFT official website and pick up a press pass at the press counter on the day in order to enter the Press Viewing (on March 8) and to otherwise conduct press activities during the event.

▼ Press Accreditation ▼

<https://artfairtokyo.com/press/accreditation>



ART FAIR TOKYO 2018 List of Exhibitors

Galleries		Booth#		City		Galleries		Booth#		City	
A	313 ART PROJECT	N66	Seoul	B	ANDO GALLERY	N49	Tokyo	C	NAKACHO KONISHI ARTS	N38	Tokyo
	GALLERY ANZAI	N19	Tokyo		Art meets life by SOBU-SODO	N41	Tokyo		ART MON ZEN KYOTO Fine Arts by NAKANISHI SHOHOKEN	N63	Kyoto
	Aoyama Maguro	N57	Tokyo		Anglois GALLERY OF TOKYO	N44	Tokyo		Art Collection Nakano	N25	Nagoya
	ASAKUSA	N10	Tokyo		ASAKUSA	N10	Tokyo		NANAYA	N72	Tokyo
	Beyond Gallery	N38	Taipei		B&S and Small Art Co.	N64	Manila		Art Gallery Natsume	N54	Tokyo
	B&S and Small Art Co.	N64	Manila	D	Boneman's Gold by Natsume-Books	N94	Tokyo		rise hendu contemporary art	N27	Tokyo
E	B&S and Small Art Co.	N64	Manila		B&S and Small Art Co.	N64	Manila		galerie richdo	N03	Tokyo / Fukuoka / Kanazawa / Paris / Taipei
	B&S and Small Art Co.	N64	Manila		B&S and Small Art Co.	N64	Manila		NOA CONTEMPORARY	N14	Nagoya
	B&S and Small Art Co.	N64	Manila		B&S and Small Art Co.	N64	Manila		NUKADA GALLERY	N92	Tokyo / Osaka / London
	B&S and Small Art Co.	N64	Manila		B&S and Small Art Co.	N64	Manila		galerie OLYM	N18	Tokyo
	B&S and Small Art Co.	N64	Manila		B&S and Small Art Co.	N64	Manila		OTSUKA FINE ART	N73	Tokyo
F	B&S and Small Art Co.	N64	Manila		B&S and Small Art Co.	N64	Manila		GALLERY OUT of PLACE	N07	Nara / Tokyo
	B&S and Small Art Co.	N64	Manila		B&S and Small Art Co.	N64	Manila		OVER THE INFLUENCE	N31	Hong Kong
	B&S and Small Art Co.	N64	Manila		B&S and Small Art Co.	N64	Manila		PERROTTIN	N23	Paris / New York / Hong Kong / Seoul / Tokyo
	B&S and Small Art Co.	N64	Manila		B&S and Small Art Co.	N64	Manila		Photo Project—curated by Toshio Shimizu, MITSUKOSHI	N96	Tokyo
	B&S and Small Art Co.	N64	Manila		B&S and Small Art Co.	N64	Manila		POLA ART FOUNDATION	N18	Tokyo
	B&S and Small Art Co.	N64	Manila		B&S and Small Art Co.	N64	Manila		Qing Art Gallery	N65	Taipei
G	B&S and Small Art Co.	N64	Manila		B&S and Small Art Co.	N64	Manila		GALLERY REN	N74	Tokyo
	B&S and Small Art Co.	N64	Manila		B&S and Small Art Co.	N64	Manila		rin art association	N30	Tokyo
	B&S and Small Art Co.	N64	Manila		B&S and Small Art Co.	N64	Manila		SAHOOO GALLERY	N36	Tokyo
	B&S and Small Art Co.	N64	Manila		B&S and Small Art Co.	N64	Manila		SAKURADO FINE ARTS	N43	Tokyo
	B&S and Small Art Co.	N64	Manila		B&S and Small Art Co.	N64	Manila		SANKENDO LTD.	N71	Tokyo
	B&S and Small Art Co.	N64	Manila		B&S and Small Art Co.	N64	Manila		Satelites ART LAB	N89	Tokyo
H	B&S and Small Art Co.	N64	Manila		B&S and Small Art Co.	N64	Manila		SCAL THE BATHHOUSE	N09	Tokyo
	B&S and Small Art Co.	N64	Manila		B&S and Small Art Co.	N64	Manila		GALLERY SEIZAN	N09	Tokyo
	B&S and Small Art Co.	N64	Manila		B&S and Small Art Co.	N64	Manila		SH-ART PROJECT	N06	Tokyo
	B&S and Small Art Co.	N64	Manila		B&S and Small Art Co.	N64	Manila		Shibuya Kuratation Co., Ltd.	N29	Tokyo
	B&S and Small Art Co.	N64	Manila		B&S and Small Art Co.	N64	Manila		SHRHOOD GALLERY	N51	Tokyo / Osaka
	B&S and Small Art Co.	N64	Manila		B&S and Small Art Co.	N64	Manila		MSA SHIN GALLERY	N08	Tokyo
I	B&S and Small Art Co.	N64	Manila		B&S and Small Art Co.	N64	Manila		SHRSEIDO	N17	Tokyo
	B&S and Small Art Co.	N64	Manila		B&S and Small Art Co.	N64	Manila		Orient Occident / Shoun Oriental Art	N37	Tokyo / New York
	B&S and Small Art Co.	N64	Manila		B&S and Small Art Co.	N64	Manila		Shugafuta	N48	Tokyo
	B&S and Small Art Co.	N64	Manila		B&S and Small Art Co.	N64	Manila		SHUKADO	N97	Tokyo
	B&S and Small Art Co.	N64	Manila		B&S and Small Art Co.	N64	Manila		SHUMOKU GALLERY	N32	Nagoya
	B&S and Small Art Co.	N64	Manila		B&S and Small Art Co.	N64	Manila		SHUNPUO GALLERY	N91	Tokyo
J	B&S and Small Art Co.	N64	Manila		B&S and Small Art Co.	N64	Manila		Shunsei Gallery	N49	Tokyo
	B&S and Small Art Co.	N64	Manila		B&S and Small Art Co.	N64	Manila		Sokyo Gallery	N33	Kyoto
	B&S and Small Art Co.	N64	Manila		B&S and Small Art Co.	N64	Manila		GALLERY ST. IVES	N60	Tokyo
	B&S and Small Art Co.	N64	Manila		B&S and Small Art Co.	N64	Manila		Galerie Stephanie	N76	Manila
	B&S and Small Art Co.	N64	Manila		B&S and Small Art Co.	N64	Manila		Galerie Suchi	N53	Tokyo
	B&S and Small Art Co.	N64	Manila		B&S and Small Art Co.	N64	Manila		SUMSHO ART GALLERY	N30	Tokyo
K	B&S and Small Art Co.	N64	Manila		B&S and Small Art Co.	N64	Manila		SUZUKI ART GALLERY	N67	Tokyo
	B&S and Small Art Co.	N64	Manila		B&S and Small Art Co.	N64	Manila		t.gallery	N83	Tokyo
	B&S and Small Art Co.	N64	Manila		B&S and Small Art Co.	N64	Manila		Tagado	N51	Kyoto
	B&S and Small Art Co.	N64	Manila		B&S and Small Art Co.	N64	Manila		Taketa Art Co.	N53	Tokyo
	B&S and Small Art Co.	N64	Manila		B&S and Small Art Co.	N64	Manila		KENJI TAKI GALLERY	N29	Nagoya / Tokyo
	B&S and Small Art Co.	N64	Manila		B&S and Small Art Co.	N64	Manila		Galerie Taminaga	N33	Tokyo / Paris / Osaka
L	B&S and Small Art Co.	N64	Manila		B&S and Small Art Co.	N64	Manila		TANNAKA Co., Ltd.	N22	Osaka
	B&S and Small Art Co.	N64	Manila		B&S and Small Art Co.	N64	Manila		GALLERY TARGET	N05	Tokyo
	B&S and Small Art Co.	N64	Manila		B&S and Small Art Co.	N64	Manila		Galerie Tatu Art	N78	Kyoto / Nagoya
	B&S and Small Art Co.	N64	Manila		B&S and Small Art Co.	N64	Manila		TEZUKAYAMA GALLERY	N19	Osaka
	B&S and Small Art Co.	N64	Manila		B&S and Small Art Co.	N64	Manila		Tanimatsu Tada Shoten	N24	Osaka
	B&S and Small Art Co.	N64	Manila		B&S and Small Art Co.	N64	Manila		Galerie Tagesha	N46	Tokyo
M	B&S and Small Art Co.	N64	Manila		B&S and Small Art Co.	N64	Manila		TOHO ART	N95	Tokyo
	B&S and Small Art Co.	N64	Manila		B&S and Small Art Co.	N64	Manila		Watanuki Ltd. Toki-no-Wasumono	N27	Tokyo
	B&S and Small Art Co.	N64	Manila		B&S and Small Art Co.	N64	Manila		TOKYO GALLERY + BTAP	N13	Tokyo / Beijing
	B&S and Small Art Co.	N64	Manila		B&S and Small Art Co.	N64	Manila		The Tolman Collection, Tokyo	N32	Tokyo / New York
	B&S and Small Art Co.	N64	Manila		B&S and Small Art Co.	N64	Manila		Galerie Tomura	N24	Tokyo / Seoul
	B&S and Small Art Co.	N64	Manila		B&S and Small Art Co.	N64	Manila		TOYAMA GLASS STUDIO	N88	Toyama
N	B&S and Small Art Co.	N64	Manila		B&S and Small Art Co.	N64	Manila		GALLERY TSUBAKI	N79	Tokyo
	B&S and Small Art Co.	N64	Manila		B&S and Small Art Co.	N64	Manila		galerie UG	N100	Tokyo
	B&S and Small Art Co.	N64	Manila		B&S and Small Art Co.	N64	Manila		ART UNDERGROUND	N77	Manila
	B&S and Small Art Co.	N64	Manila		B&S and Small Art Co.	N64	Manila		URAGAMI SOKYU-DO	N39	Tokyo
	B&S and Small Art Co.	N64	Manila		B&S and Small Art Co.	N64	Manila		URANO	N11	Tokyo
	B&S and Small Art Co.	N64	Manila		B&S and Small Art Co.	N64	Manila		USPACE GALLERY	N06	Taipei
O	B&S and Small Art Co.	N64	Manila		B&S and Small Art Co.	N64	Manila		Watanabe-Sansodo	N42	Tokyo
	B&S and Small Art Co.	N64	Manila		B&S and Small Art Co.	N64	Manila		X Espacio	N96	Mexico City
	B&S and Small Art Co.	N64	Manila		B&S and Small Art Co.	N64	Manila		YAKATA-YOUSAI	N61	Tokyo
	B&S and Small Art Co.	N64	Manila		B&S and Small Art Co.	N64	Manila		Galerie Yamaki Fine Art	N40	Kobe
	B&S and Small Art Co.	N64	Manila		B&S and Small Art Co.	N64	Manila		Yanagase Gallery	N43	Gifu
	B&S and Small Art Co.	N64	Manila		B&S and Small Art Co.	N64	Manila		YR ARTS	N15	Taipei
P	B&S and Small Art Co.	N64	Manila		B&S and Small Art Co.	N64	Manila		YOROZU GALLERY	N52	Tokyo
	B&S and Small Art Co.	N64	Manila		B&S and Small Art Co.	N64	Manila		Yoshimi Arts	N35	Osaka
	B&S and Small Art Co.	N64	Manila		B&S and Small Art Co.	N64	Manila		Y's Gallery	N46	Tokyo
	B&S and Small Art Co.	N64	Manila		B&S and Small Art Co.	N64	Manila		GALLERY ZERO	N90	Osaka
	B&S and Small Art Co.	N64	Manila		B&S and Small Art Co.	N64	Manila				
	B&S and Small Art Co.	N64	Manila		B&S and Small Art Co.	N64	Manila				

Projects									
	Gallery Name	Booth#	City		Gallery Name	Booth#	City		
C	COMBINE / B&W gallery	P11	Kyoto		Ni Fine Arts	P11	Osaka		
H	Galerie Hanaogesho	P08	Tokyo	D	Sakao Os Contemporary	P06	Tokyo		
I	Island JAPAN	P07	Tokyo	S	Takashi Somemiyu Gallery	P09	Tokyo		
K	KAYOKOYUKI	P04	Tokyo		Sprout Curator	P01	Tokyo		
	Yutaka Kikutsu Gallery	P05	Tokyo	T	TALON GALLERY	P02	Tokyo		
N	hap gallery	P03	Tokyo						As of November 1st, 2011

As of November 1st, 2017



Art Fair Tokyo 2018 Overview

Organizers: Art Tokyo Association

Dates and Hours: Thursday, March 8 - Sunday, March 11, 2018 (4 days)

Press View	Thursday, March 8	13:00-14:00
Private View	Thursday, March 8	14:00-16:00
Vernissage	Thursday, March 8	16:00-20:00
Public View	Friday, March 9	11:00-20:00
	Saturday, March 10	11:00-20:00
	Sunday, March 11	11:00-17:00

Venues: Tokyo International Forum Hall E (3-5-1 Marunouchi, Chiyoda-ku, Tokyo)

Admission Fee: 1DAY Advanced Free Pass JPY 3,000/1DAY Free Pass JPY 3,500

* Children below elementary school are free (They must be accompanied by adults)

Cooperation: Cabinet Office, Government of Japan / Ministry of Foreign Affairs of Japan / Ministry of Economy, Trade and Industry
Ministry of Health, Labour and Welfare (TBD) / Agency for Cultural Affairs / Japan Tourism Agency

Embassy of the Islamic Republic of Afghanistan in Japan	Embassy of the Republic of Macedonia
Embassy of the Republic of Angola in Japan	Embassy of the Republic of Madagascar in Japan
Embassy of the Argentine Republic in Japan	Embassy of the Republic of Malawi in Japan
Embassy of the Republic of Armenia to Japan	Embassy of Malaysia in Japan
Embassy of the Kingdom of Bahrain to Japan	Embassy of the Republic of Maldives in Japan
Embassy of the People's Republic of Bangladesh in Japan	Embassy of the Republic of Mali to Japan
Embassy of the Kingdom of Belgium in Japan	Embassy of Mexico in Japan
Embassy of Belize in Japan	Embassy of the Republic of Moldova to Japan
Embassy of Bosnia and Herzegovina in Japan	Embassy of the Republic of Mozambique in Japan
Embassy of the Republic of Botswana in Japan	Embassy of the Republic of the Union of Myanmar, Tokyo
Embassy of Brazil	Embassy of the Republic of Namibia in Japan
British Council	Embassy of the Kingdom of the Netherlands
Embassy of Brunei Darussalam in Japan	New Zealand Embassy, Tokyo
Embassy of the Republic of Bulgaria to Japan	Embassy of the Republic of Nicaragua in Japan
Embassy of Burkina Faso in Japan	Norwegian Embassy Tokyo
Embassy of Canada in Japan	Embassy of the Sultanate of Oman
Embassy of the Republic of Chile in Japan	Embassy of the Islamic Republic of Pakistan in Japan
Embassy of the People's Republic of China in Japan	Embassy of the Republic of Palau in Japan
Embassy of the Republic of Colombia in Japan	Embassy of the Republic of Panama in Japan
DR Congo Embassy/Tokyo	Embassy of the Republic of Paraguay in Japan
Embassy of the Republic of Cuba in Japan	Embassy of the Republic of Peru in Japan
Embassy of the Czech Republic in Japan	Embassy of the Republic of the Philippines, Tokyo, Japan
Royal Danish Embassy Tokyo	Polish Cultural and Information Center in Tokyo
Embassy of the Republic of Djibouti in Japan	Embassy of the Independent State of Samoa in Japan
Embassy of the Dominican Republic in Japan	Embassy of the Republic of San Marino in Japan
Embassy of the Republic of El Salvador in Japan	Embassy of the Republic of Senegal in Japan
Embassy of the Republic of Fiji	Embassy of the Republic of Singapore in Japan
The Finnish Institute in Japan	Embassy of the Slovak Republic in Japan
Embassy of France/ Institut français du Japon	Embassy of the Republic of Slovenia Tokyo
Embassy of the Federal Republic of Germany	Embassy of the Republic of South Africa in Japan
Embassy of the Republic of Haiti in Japan	Embassy of Spain
Embassy of the Republic of Honduras in Japan	Embassy of the Republic of the Sudan in Japan
Embassy of Hungary	Embassy of Switzerland in Japan
Embassy of the Republic of Iceland in Japan	Embassy of the Syrian Arab Republic in Japan
Embassy of the Republic of Indonesia in Japan	Royal Thai Embassy in Japan
Embassy of the Islamic Republic of Iran	Embassy of the Democratic Republic of Timor-Leste
Embassy of Ireland, Tokyo	Embassy of the Republic of Togo in Japan
Embassy of Israel in Japan	Embassy of the Republic of Tunisia in Japan
Embassy of Italy in Tokyo	Embassy of Turkmenistan in Japan
Embassy of Jamaica in Japan	U.S. Embassy, Tokyo
Embassy of the Hashemite Kingdom of Jordan in Japan	Embassy of the Republic of Uganda in Japan
Embassy of the Republic of Kenya in Japan	Embassy of the Oriental Republic of Uruguay in Japan
Korean Cultural Center Korean Embassy in Japan	Embassy of the Republic of Uzbekistan in Japan
Embassy of the Republic of Lebanon in Japan	Embassy of the Socialist Republic of Viet Nam in Japan
Embassy of the Kingdom of Lesotho to Japan	Embassy of the Republic of Zambia in Japan
Embassy of the Republic of Liberia in Japan	Embassy of the Republic of Zimbabwe in Japan
Embassy of the Republic of Lithuania in Japan	



Kyoto Prefecture / Kyoto City / Kanazawa City / Toyama City
Japanese Red Cross Society
Nikkei Inc. / The Mainichi Newspapers Co.,Ltd / Nippon Cultural Broadcasting Inc. / TBS Radio,Inc. / J-WAVE

Sponsors: Warehouse TERRADA / Deutsche Bank Group / MORIMOTO Co.,Ltd. / Mastercard Priceless Japan
Main Partner Hotels: Park Hotel Tokyo
Partner Hotels: Shangri-La Hotel, Tokyo
Supported by: TOYOTA MOTOR CORPORATION / Luxury Card / Teraoka Seiko Co., Ltd. / MOTTOX inc. / DASSAI /
ARK HILL CLUB / ROPPONGI HILL CLUB
Official Furniture: IROCO DESIGN Japan
Collaborative Partner: The Executive Committee of Tokyo Girls Collection / General Incorporated Association Promoting the
Independence
of People with Disabilities Organization / Seikatsu no Tomo Co. / HAKKOU BIJYUTSU CO., LTD.
Special Support from: Idemitsu Museum of Arts / The Museum of Modern Art, Gunma / SUNTORY MUSEM of ART /
Toguri Museum of Art / Hara Museum of Contemporary Art / Pola Museum of Art /
Mitsubishi Ichigokan Museum, Tokyo / Mori Art Museum / YOKOHAMA MUSEM OF ART

Inquiry: Art Tokyo Association likuradai bldg. 4F, 1-9-12 Azabudai, Minato-ku, Tokyo 106-0041 JAPAN
Tel: +81-(0)3-5797-7912 / Fax: +81-(0)3-5797-7913 / E-mail: info@artfairtokyo.com

What is ART FAIR TOKYO?

ART FAIR TOKYO is the largest international art fair in Japan, held in Tokyo every spring. Over 150 galleries from Japan and overseas participate in the fair, offering works for display and sale in a wide variety of genres including antiques, crafts, Nihonga (Japanese painting), modern and contemporary art. During the event, there are historically significant Japanese art works on display as well as special exhibitions attempting to communicate the "now" of Tokyo's art scene and market, and related symposia and parties held at locations around the city. The international and diverse art market platform, ART FAIR TOKYO, is a place not only for art fans and art industry people, but also ambassadors from various countries, government officials, and business leaders to exchange information and engage socially. (57,800 attendees in 2017)